

# 10 GHz Fiber Optical Amplified APD Detector / Receiver

Analog and Digital, 850-1650 nm



DATASHEET

[Return to the Webpage](#)



## Features

- Low Darkcurrent
- Low Capacitance
- InGaAs Avalanche Photodiode
- Low Noise Transimpedance Amplifier
- High Bandwidth

## Applications

- Long Haul Receivers for SONET/SDHADM's
- DWDM Receivers
- Optical Cross-Connects



The FRXM series consists of fiber-coupled, high-speed InGaAs APD with a broad operation bandwidth from 85 kHz to 10 GHz. Each FRXM integrates a low-noise, high-gain amplifier to ensure optimal signal performance. The series is also available as a plug-and-play metal protected module for ease of use.

Due to their high sensitivity to electrostatic discharge (ESD), warranty coverage applies only to fully metal-enclosed modules, which provide proper protection. Other versions of the lasers and photodetectors are not covered by warranty and must be handled with extreme caution.

## Specifications

Parameter	Min	Typical	Max	Unit
APD Breakdown Voltage, $V_b$ ( $I_d = 10 \mu A$ )	20		40	V
Bandwidth (APD gain $3 \leq M \leq 9$ )	7			GHz
Low Frequency Cut-off			85	kHz
Output Return Loss (130 kHz to 7.5 GHz)		8		dB
Sensitivity			-22	dBm
Overload	-6	-3		dBm
Optical Return Loss			-27	dB
Transimpedance	550			$\Omega$
Thermistor ( $T = 25^\circ C$ )	9.9		10.1	k $\Omega$
Power Dissipation		0.65	0.8	W
Supply Voltage	-5.46	-5.2	-4.94	V
PD Supply Voltage	20		40	V
Supply Voltage Vee	-5.5		0	V
Supply Voltage $V_{PD}$	20		40	V
PD Forward Supply Current			2	mA
PD Reverse Supply Current			2	mA
Maximum Optical Input Power			0	dBm
RF Connector		SMA		
Operating Case Temperature	0		+70	$^\circ C$
Storage temperature	-40		+85	$^\circ C$

### Notes:

\* Temperature =  $25^\circ C$ ,  $\lambda = 1550 \text{ nm}$ ,  $R_L = 50\Omega$ ,  $V_{ee} = -5.2V$

All specifications without connector.

**Legal notices:** All product information is believed to be accurate and is subject to change without notice. Information contained herein shall legally bind Agiltron only if it is specifically incorporated into the terms and conditions of a sales agreement. Some specific combinations of options may not be available. The user assumes all risks and liability whatsoever in connection with the use of a product or its application.

Rev 05/04/26

[+1 781-935-1200](tel:+17819351200)

[sales@agiltron.com](mailto:sales@agiltron.com)

[www.agiltron.com](http://www.agiltron.com)

Information contained herein is deemed to be reliable and accurate as of the issue date. We reserve the right to change the design or specifications at any time without notice. Agiltron is a registered trademark of Optowares Corporation in the U.S. and other countries.

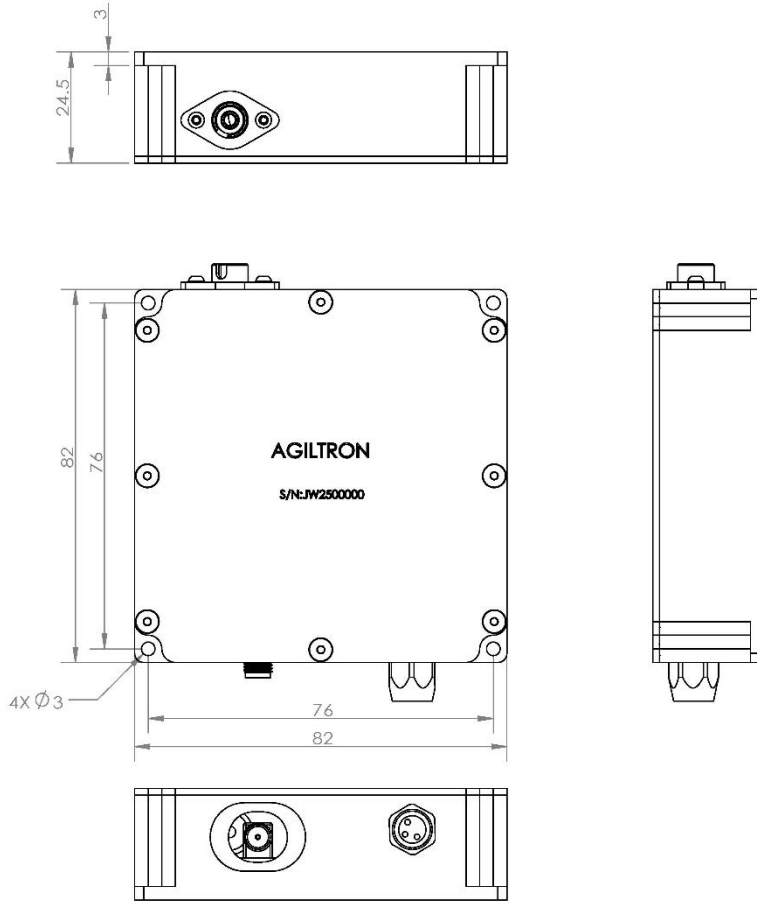
# 10 GHz Fiber Optical Amplified APD Detector / Receiver

Analog and Digital, 850-1650 nm



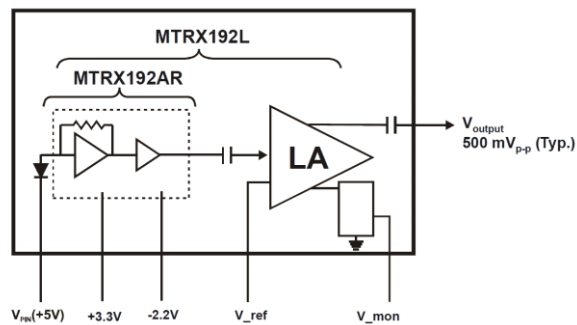
DATASHEET

## Dimensions (mm)



\*Product dimensions may change without notice. This is sometimes required for non-standard specifications.

## Function Diagram



# 10 GHz Fiber Optical Amplified APD Detector / Receiver



Analog and Digital, 850-1650 nm

## DATASHEET

### Ordering Information (Part Number)

Prefix	Detector Type	Wavelength Range	Bandwidth	Package <sup>[1]</sup>	Configuration	Connector <sup>[2]</sup>
<b>FRXM-</b>	APD = 2	1200-1600 nm = 1	10 GHz = 10	Component = 1 Module = 2	Standard = 11	FC/PC = 2 FC/APC = 3 Special = 0

[1]. Module contains driver and power supply.

[2]. The connector cannot be installed directly onto bare fiber, as it is prone to damage during shipping. However, the connector can be assembled on bare fiber if a 3 cm protective loose tube is added for reinforcement. The customer can remove this protective tube after testing. The optical power handling of a standard connector is less than 0.5 W for SM28 fiber and decreases further with smaller core fibers.